



CIMCO is an industry leading developer of software solutions for Computer Integrated Manufacturing and Industry 4.0. Our software suite includes advanced CNC editors, simulation software, DNC communications software, Manufacturing Data Collection for real-time monitoring and analysis of shop floor productivity, and Manufacturing Data Management for managing, organizing and securely storing production related data.

Since 1991, CIMCO has helped companies worldwide improve their competitive edge by providing reliable software and outstanding on-site assistance. Our network of CAD/CAM/CNC resellers and consultants have sold more than 100,000 licenses worldwide and we hold great pride in continuously supporting and meeting our customers' demands by developing intelligent and competitive solutions.

## THE FULL SUITE OF CIMCO SOFTWARE



### CIMCO Edit

Full-featured NC editing, simulation and machine communication tool. Powerful add-ons available.



### CIMCO DNC-Max

The leading solution for NC program transfers to and from CNC machines. Compatible with machines and files.



### CIMCO MDC-Max

Real-time manufacturing data collection. Optimize use of resources, and streamline processes.



### CIMCO NC-Base

Organize, manage, and protect part programs and related production documents efficiently.



### CIMCO MDM

Complete solution for manufacturing document management. Integrates with CAD/CAM systems from leading vendors.



### CIMCO Scheduler

Production scheduling and order tracking solution. Improve delivery times and use of machines and resources.



### CIMCO Machine Simulation

Prove-out your NC program on a 3D CNC machine model. Automatic checks for collisions, out of limit moves and more.



### CIMCO CNC-Calc

A basic CAD/CAM. Draw 2D geometrical contours and lay out toolpaths for milling and turning machines.



### CIMCO Mazatrol Viewer

Enables CIMCO Edit to read, preview and print Mazatrol binary files for both milling and turning.



### CIMCO Teachware

E-learning solution that introduces students to working with digital machine tools.

## MAIN OFFICES

**DENMARK**  
CIMCO A/S  
VERMUNDSGADE 38A  
COPENHAGEN, DENMARK

TEL: +45 45 85 60 50  
FAX: +45 45 85 60 53  
EMAIL: [info@cimco.com](mailto:info@cimco.com)

**AMERICAS**  
CIMCO AMERICAS LLC  
1980 N ATLANTIC AVE STE 229  
COCOA BEACH, FL 32931

TEL: +1 704 644 3587  
FAX: +1 704 943 0514  
EMAIL: [info@cimco.com](mailto:info@cimco.com)

CIMCO HEADQUARTERS AND MAIN TRAINING FACILITY ARE LOCATED IN THE DANISH CAPITAL COPENHAGEN. THIS IS THE BASE OF OPERATION FOR THE SALES AND SUPPORT TEAM. OUR TECHNICAL SERVICE STAFF TRAVELS WORLDWIDE AND HAS LOCAL OFFICES IN SELECT COUNTRIES.

## LOCAL OFFICES / RESELLERS WORLDWIDE

### EUROPE

AUSTRIA	FINLAND	NETHERLANDS	SLOVAKIA
BELARUS	FRANCE	NORWAY	SLOVENIA
BELGIUM	GERMANY	POLAND	SPAIN
BULGARIA	HUNGARY	PORTUGAL	SWEDEN
CROATIA	IRELAND	ROMANIA	SWITZERLAND
CZECH REPUBLIC	ISRAEL	RUSSIA	TURKEY
DENMARK	ITALY	SCOTLAND	UKRAINE
ESTONIA	LATVIA	SERBIA AND MONTENEGRO	UNITED KINGDOM

### SOUTH / NORTH AMERICA

BRAZIL	USA
CANADA	VENEZUELA
CHILE	
COLOMBIA	
COSTA RICA	
ECUADOR	
MEXICO	
PERU	

### ASIA / MIDDLE EAST / OCEANIA

AUSTRALIA	SINGAPORE
CHINA	SOUTH AFRICA
HONG KONG	SOUTH KOREA
INDIA	TAIWAN
INDONESIA	THAILAND
JAPAN	UNITED ARAB EMIRATES
MALAYSIA	VIETNAM
NEW ZEALAND	



## Manufacturing document management

 CIMCO AUTHORIZED RESELLER

**AtroCam GmbH**  
Buchenstr. 2  
D-72654 Neckartenzlingen  
Fon: +49 7127 97 22 37  
Mail: [cnc@atrocam.de](mailto:cnc@atrocam.de)



More information at  
[www.cimco.com](http://www.cimco.com)



Follow on Facebook  
[/cimco](https://www.facebook.com/cimco)



Watch our product videos at  
[/cimcovieo](https://www.youtube.com/c/cimcovieo)



Follow on LinkedIn  
[/company/cimco-a-s](https://www.linkedin.com/company/cimco-a-s)



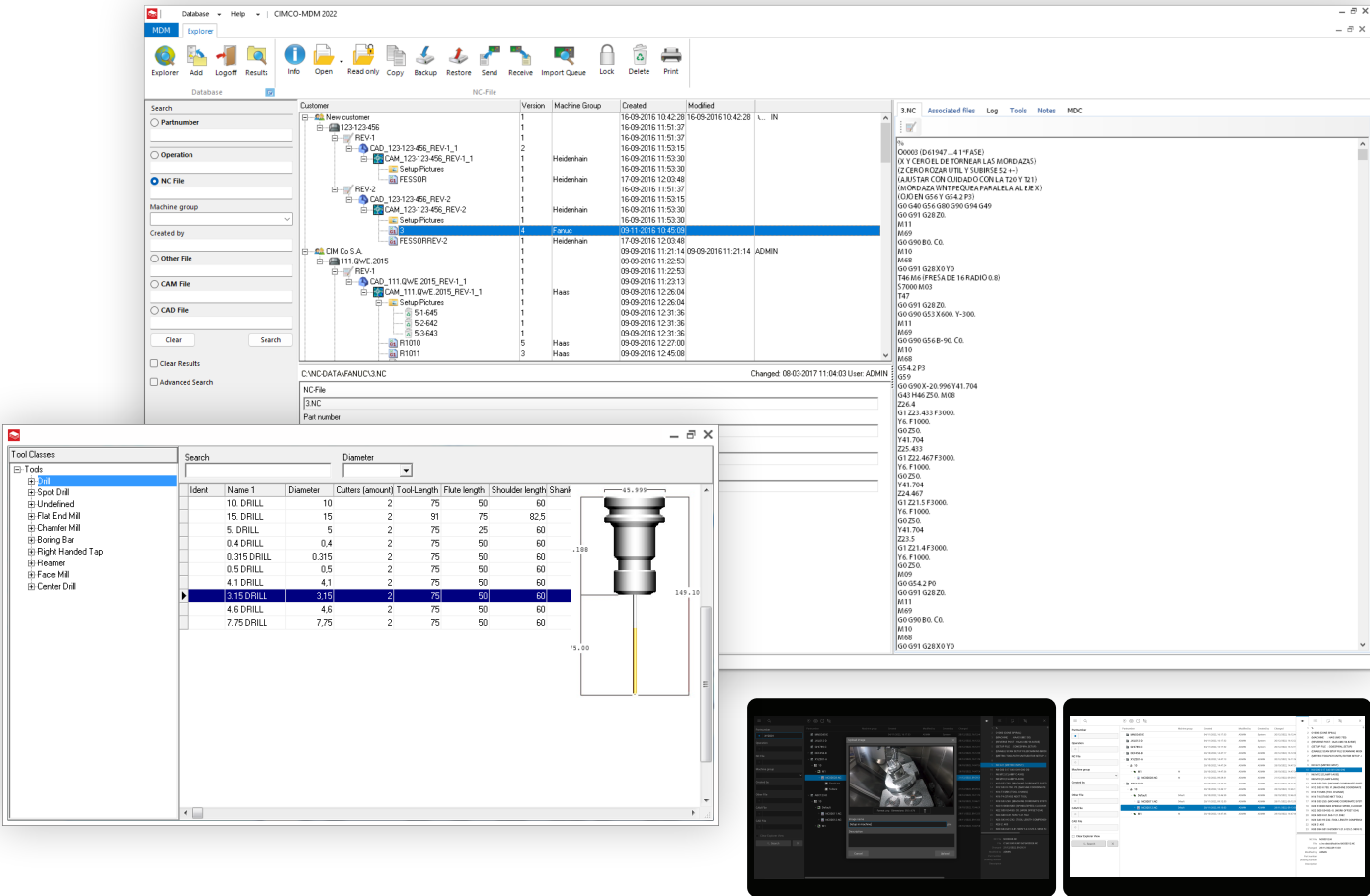


INTRODUCTION

What is CIMCO MDM?

MDM helps keep your documents organized, secure and accessible to users in your company.

MDM is the central hub that gathers all your production documents and provides easy access to the applications you use the most. Restrict file access for users and machines, transfer files to and from machines, set up status-driven workflows, generate reports and easily backup or restore documents with the built-in versioning system.



BENEFITS

Why use CIMCO MDM?

- Always get the right document**

MDM ensures the “right version” of a document is always accessed and only by authorized users.
- Keep documents organized**

MDM keeps documents organized by restricting where they can be stored and who can access them.
- Work smarter**

Access vital applications, your production documents and manage file transfers to and from machines all from one place.
- Secures your documents**

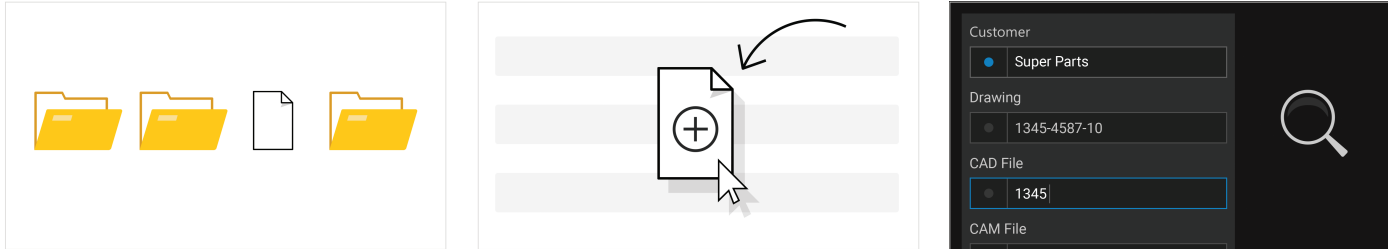
Restrict who can access, modify, approve or transfer files and to which machines. Lock files when editing and force user input when checked-in.
- Production reports in a snap**

Save time with auto-generated production documents and reports such as Tool lists, Setup sheets, tool usage and QA documents in PDF and Word format.
- Less clutter, more eco-friendly**

Reduce paper clutter and printouts by instead accessing the digital production documents directly from the shopfloor or anywhere else.

FEATURES

Some of the many features included

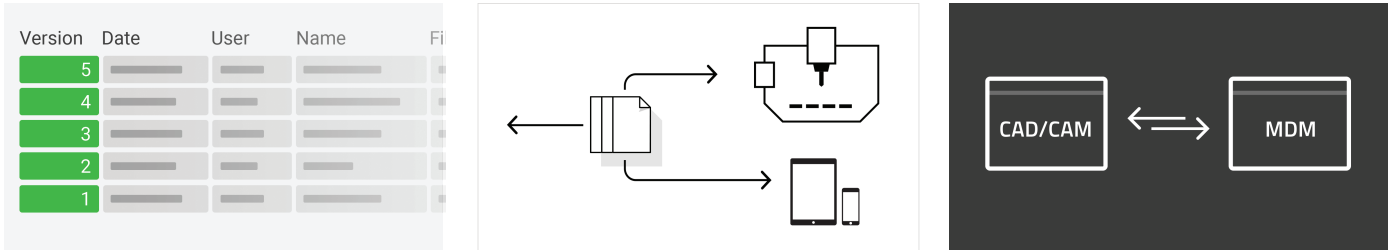


- Works with your files**

MDM work with your existing file structure in its current location. Effectively adding all the powerful functionality in MDM ‘on top’ of your existing files.
- Easy to add files**

Drag/drop files to auto-rename and store files in the right location based on your preferences. Incoming files can be placed in the Import Queue for later approval.
- Advanced search**

Search panel with global and folder specific search fields that change based on selection. Searches with multiple results are listed and can be exported to Excel.

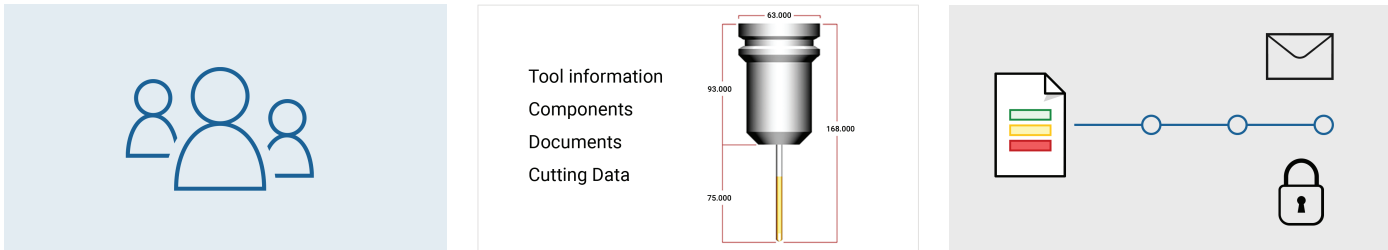


- Version control**

All documents are kept under version control and automatically raised in version when saved. Browse the version history of any file, compare versions side-by-side, or restore an older version if needed.
- Machine file transfers**

DNC support for most network-based machines including the option to remotely request files directly at the machine using the control or MDM Web Client. Thereby not having to leave the machine.
- Software, CAD/CAM integration**

Integrated with editors, DNC, MDC, and CAD/CAM systems from leading vendors. Preview/open part files directly, exchange tool information, auto-transfer and store generated NC code in MDM.



- Logs and user permissions**

Logging and fine-grained control over user permissions such as who can add, edit, approve/reject, send/receive, etc. Set permissions for any action including who can send files to certain machines.
- Tool manager**

Manage all your tools in one location and exchange tool data across applications. Search, import or create custom tools. Includes tool diagrams with key measurements and usage statistics.
- Automated workflows**

Trigger custom workflows on actions such as a file changing status. A workflow can be locking a file for approval when modified, sending an email, requesting the fill out of a form, etc.

- ✓ Modern Web client for remote access via mobile or tablet  
Access MDM from anywhere using any desktop or mobile device.
- ✓ Supports mobile camera  
Photos of machine setup are automatically imported and stored.
- ✓ Machine specific Levels  
For safety, restrict folders and file transfers to specific machines.
- ✓ Includes CIMCO Edit Standard  
Fully integrated with CIMCO Edit for NC program editing.

MORE | [www.cimco.com](http://www.cimco.com) →

Visit our website to discover many more features, videos or to download our free, 30 day trial version of CIMCO MDM.